



2025

29er & 420 Autumn Regatta

24 - 25 May 2025

Organising Authority

Royal Akarana Yacht Club - 8-10 Tamaki Drive - Okahu Bay, Auckland 1071
VHF: Channel 17 | Race Management: 021 175 0632 | sailing@rayc.co.nz

SAILING INSTRUCTIONS

1 RULES

- 1.1 The event is governed by the rules as defined in *The Racing Rules of Sailing*.
- 1.2 The Yachting New Zealand Safety Regulations Part One shall apply.
- 1.3 Association class rules will apply to all yachts competing.
- 1.4 [DP] Boats shall at all times observe the Auckland Council Navigation Safety bylaws in particular Part 8, 55. A Moving prohibited zone.
 - (1) "A moving prohibited zone extending to 100m astern and 100m to each side of a large vessel, and continued at such width to 500m ahead, following the line of the buoyed channel when changing course, is reserved around a large vessel, when that large vessel is underway within the pilotage areas of Auckland (excluding Tamaki River) and Manukau.
 - (2) "When navigating within a marked channel, the moving prohibited zone to the side of the vessel is reduced to the width of the marked channel and the zone ahead of the vessel shall follow the line of the marked channel."
 - (3) The owner or person in charge of a vessel must not navigate the vessel within the moving prohibited Zone of a large vessel, within the pilotage areas of Auckland (excluding Tamaki River) and Manukau.
 - (4) For the purpose of this clause, a tug and barge is considered a composite unit.
- 1.6 Appendix T, Arbitration may apply.

2. CHANGES TO SAILING INSTRUCTIONS

- 2.1 Any change to the sailing instructions will be posted before 0900 on the day it will take effect, except that any change to the schedule of races will be posted by 1800 on the day before it will take effect.

3. NOTICES TO COMPETITORS

- 3.1 Notices to competitors will be hosted on the official WhatsApp group
<https://chat.whatsapp.com/FUjmKkNDgHH2MQJhBkJtgy>

4. CODE OF CONDUCT

Competitors and support persons shall comply with reasonable requests from race officials.

5. SIGNALS MADE ASHORE

- 5.1 Signals made ashore will be displayed at the flagpole in front of the club
5.2 When flag AP is displayed ashore, '1 minute' is replaced with 'not less than 60 minutes' in Race Signals AP.

6. SCHEDULE

- | | | | |
|-----|-----------------|-----------|-----------------------------------|
| 6.1 | Saturday 24 May | 0900-0950 | Registration |
| | | 1000 | Welcome & Briefing |
| | | 1130 | Warning Signal / Up to five races |
| | Sunday 25 May | 1030 | Warning Signal / Up to five races |
- 6.3 On the last scheduled day of racing no warning signal will be made after 1600.

7. CLASS FLAGS

- 7.1 The class flags will be the 29er class flag 420 class flags.

8. RACING AREA

- 8.1 NOR Addendum A shows the plan of the event venue.
8.2 SI Addendum A shows the location of the racing areas.

9. COURSES

- 9.1 The course will be a windward/leeward. The diagram in SI Addendum B shows the course options, the order in which marks are to be passed, and the side on which each mark is to be left. Course Codes will be displayed prior to each race on a noticeboard located on the stern of the RO start finish boat.

10. MARKS

- 10.1 Mark descriptions are shown in Addendum B – courses

11. OBSTRUCTIONS

- 11.1 "Fairway Marks" - Yachts shall not pass between the shore and Tamaki beacon, Torpedo Bay Marker, permanently moored boats and the wave-break, or between Bean Rock reef black mark and Bean Rock

12. THE START

- 12.1 The starting line is between a staff displaying an orange flag on the signal vessel at the starboard end and the course side of the port-end starting mark.
12.2 A boat that does not start within five minutes after her starting signal will be scored Did Not Start without a hearing. This changes RRS A5.1 and A5.2.

13. CHANGE OF THE NEXT LEG OF THE COURSE

13.1 While boats are racing, the RC may signal a change of a leg for the course that begins at a rounding mark or gate by changing the position of the next mark or laying a new mark and signalling boats before they begin that leg.

14. THE FINISH

14.1 The finishing line is between a staff displaying a blue flag on the finishing vessel at the starboard end and the course side of the port end finishing mark

15. PENALTY SYSTEM

15.1 RS 44.1 is changed so that the Two-Turns Penalty is replaced by the One-Turn Penalty

16. TIME LIMITS & TARGET TIMES

16.1 The time limits and target times in minutes for the first boat are as follows:

Class	Target Time	Time-Limit
29er	25 minutes	50 minutes
420	25 minutes	50 minutes

16.2 If no boat passes the first mark within the target time the race committee will abandon the race. Failure to meet the target time will not be grounds for redress. This changes 62.1(a), *Protest Contents*

16.3 Boats failing to finish within 10 minutes after the first boat sail the course and finishes will be scored Did Not Finish. This changes rule 35, *Time Limit and Scores, A4, Low Point Scoring System, and A5, Scores Determined by the Race Committee*

17. HEARING REQUESTS

17.1 The protest time limit is 60 minutes after the last boat finishes the last race of the day or the race committee signals no more racing today, whichever is later. The time will be posted on the official notice board.

17.2 Hearing request forms are available from the race office at RAYC

17.3 Notices will be posted no later than 30 minutes after the protest time limit to inform competitors of hearings in which they are parties or named as witnesses. Hearings will be held in the protest room, located at RAYC at a time to be notified to competitors involved.

17.4 A list of boats that have been penalized for breaking RRS 42 under Appendix P will be posted.

18. SCORING

18.1 Three races are required to be completed to constitute a series.

18.2 (a) When fewer than 6 races have been completed a boats series score will be the total of her race scores

(b) When 6 or more races have been completed, a boat's series score will be the total of her race scores excluding her worst score.

19. SUPPORT PERSON VESSELS

19.1 Support person vessels shall be registered with the OA.

19.2 All support person vessels shall always have an engine safety cut out switch (kill cord) attached to the driver while the engine is running unless prior written exemption has been provided by the Organising Authority.

20. RISK STATEMENT

RRS 3 states: 'The responsibility for a boat's decision to participate in a race or to continue to race is hers alone.' By participating in this event each competitor agrees and acknowledges that sailing is a potentially dangerous activity with inherent risks. These risks include strong winds and rough seas, sudden changes in weather, failure of equipment, boat handling errors, poor seamanship by other boats, loss of balance on an unstable platform and fatigue resulting in increased risk of injury. Inherent in the sport of sailing is the risk of permanent, catastrophic injury or death by drowning, trauma, hypothermia or other causes.

21. INSURANCE

Each participating boat shall be insured with valid third-party liability insurance with a minimum cover of \$500,000 per incident or the equivalent.

22. PRIZES

Prizes will be awarded

23. RIGHTS TO USE NAME AND LIKENESS

By participating in the event, a competitor automatically grants to the Organising Authority and the sponsors of the event, the right in perpetuity, to make, use and show, from time to time and at their discretion, any motion pictures, still pictures and live, taped or film television and other reproductions of him/her during the period of the competition for said event in which the competitor participated and, in all material, related to the said event without compensation.

24. USE OF DRONE FOR MEDIA

All those who take part in the race as competitors as well as support crew or spectators agree to be overflown by a drone during the duration of the event, this includes your person and your property (boats).

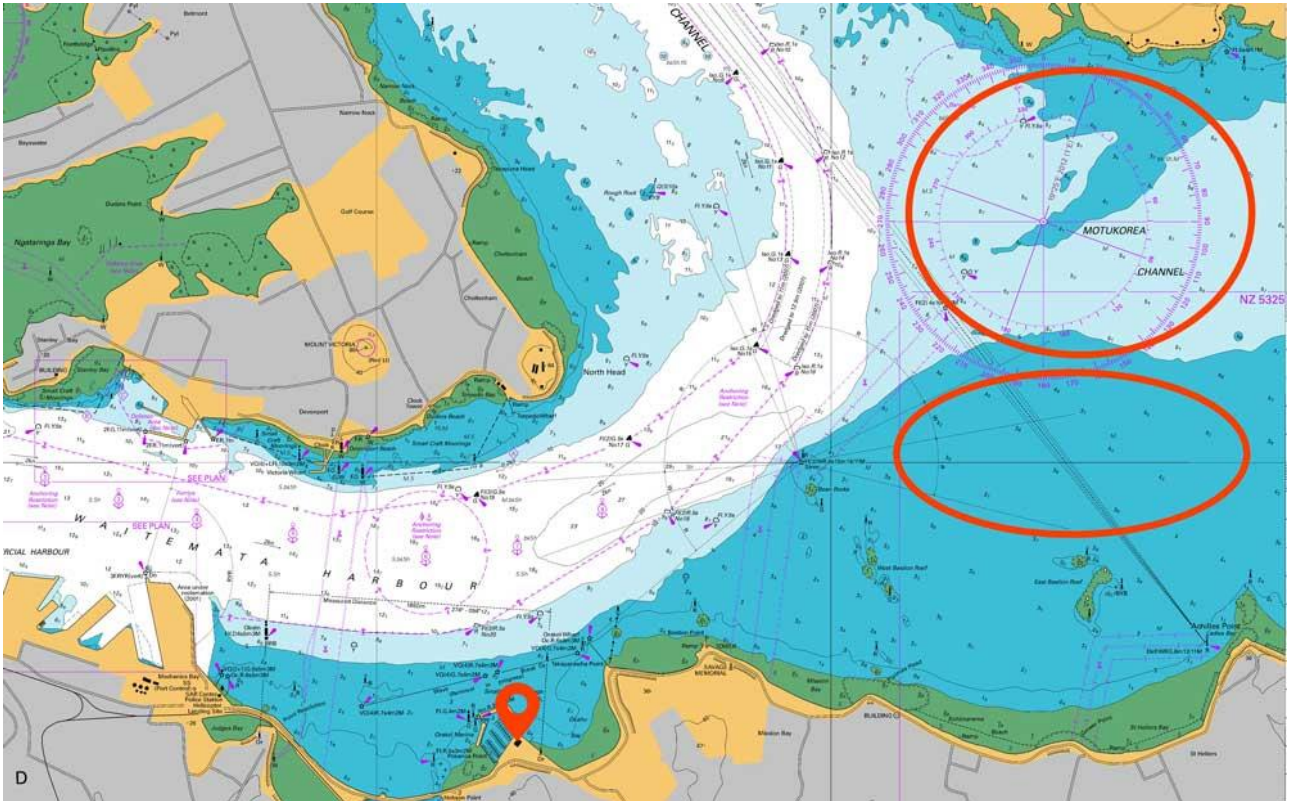
25. FURTHER INFORMATION

For further information please contact:
sailing@rayc.co.nz

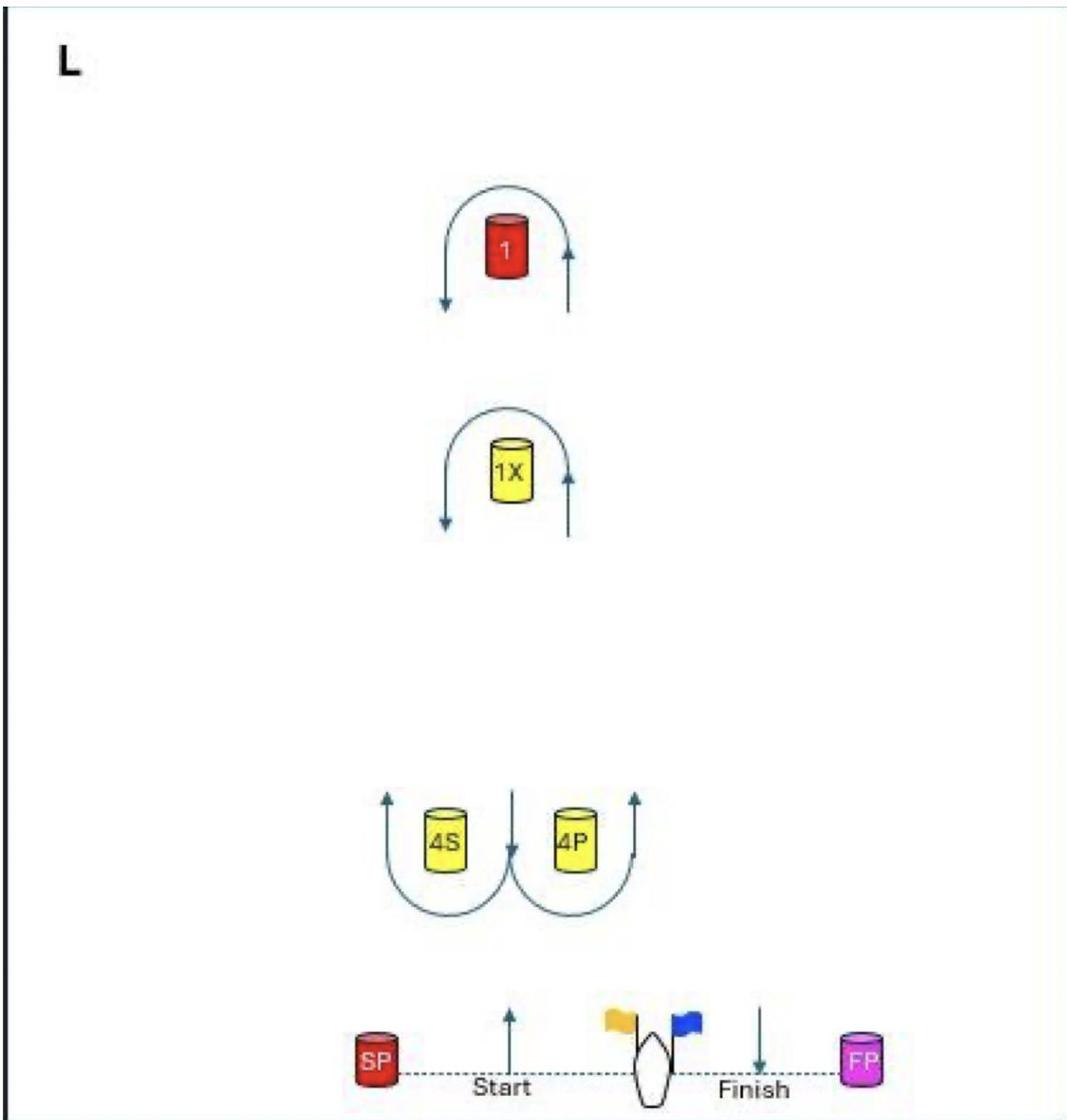
Addendum A

Racing Area

The racing area will be the inner Waitemata Harbour, in an area approximately described as stretching from Rough Rock, Bean Rock, St Heliers Beach.



Addendum B – COURSES



Mark Number	Description
1	Orange Cylinder
1X	Yellow Cylinder
Gates	Orange Triangle
Start & Finish	Orange teardrops

Class	Course Code	Description
420	LX1	Start – 1X– Finish
420	LX2	Start – 1X– Gate – 1X – Finish
29er	L1	Start – 1 – Finish
29er	L2	Start – 1 – Gate – 1 – Finish